

MALAVAC, INC. SAFETY INSTRUCTIONS

WARNING

DO NOT OPERATE THIS BIN DUMPER UNTIL:

1. Fork truck drivers know that the forks stops at the end of top or bottom carriage bar are in place. Make sure the bottom attaching clips are attached.
2. Drivers are forklift safety trained for forklift attachments and safe load carrying.
3. A derated safety data plate is installed on the forklift for this attachment.
4. Hoses to squeeze arm cylinders are checked daily for wear and alignment.
5. Hydraulic oil is clean.
6. Bin dumper is adjusted to hold bins securely.
7. When repairing hoses or tilt cylinders, be sure the top frame is tilted all the way forward and pressure is released from both tilt cylinders.
8. Visual safety decals must be followed
 1. NO HAND HOLD
 2. No one is to be under or in front of the bin dumper
 3. Make sure safety decals are in good condition

LIFTMASTER BIN DUMPER

INSTALLATION INSTRUCTIONS

The Liftmaster Dumper is designed to attach to the forklift carriage in the same manner as do the forks at their top position. Lower clamp attachments are “bolt on type” designed to hold the dumper firmly to the bottom of the carriage.

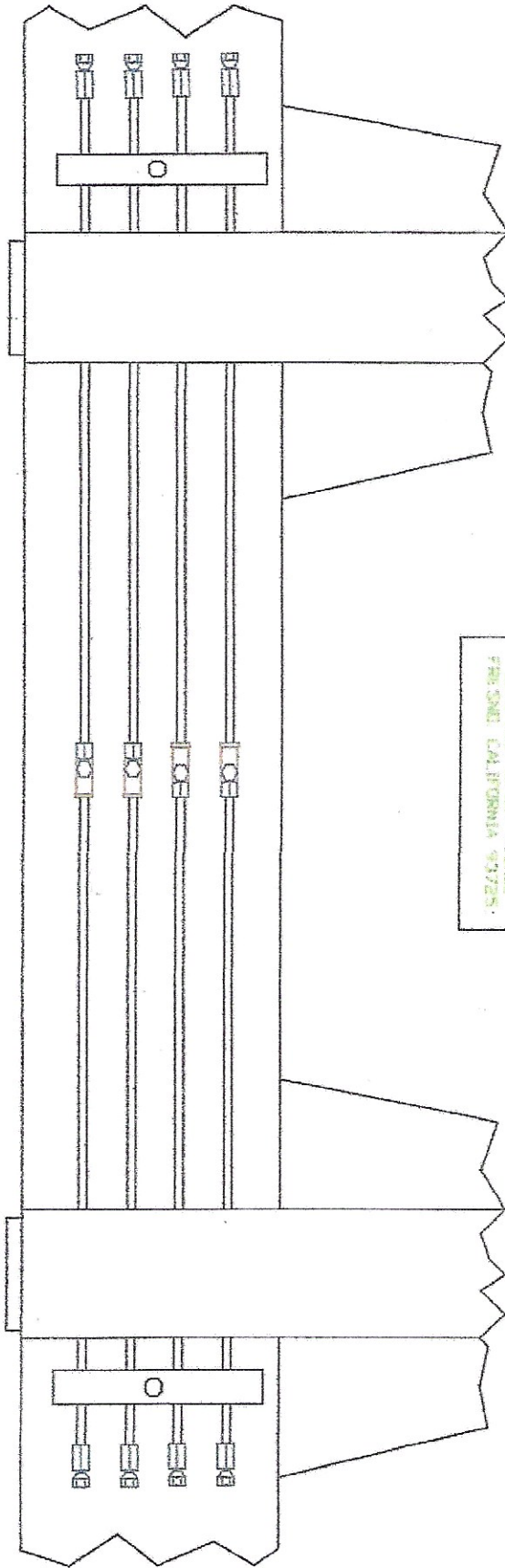
The manifold consisting of 4 extra Heavy Duty ¼” pipe connecting the hi-pressure hose at each end provides the center ports as follows:

- #1 Top port opens the squeeze plate.
- #2 Port or second from the top activates closing of the squeeze plates.
- #3 Port or 3rd down from the top returns the tilt cylinder from dump position.
- #4 Port activates the tilt or dump cylinder into forward motion.

When the Liftmaster Dumper is equipped with a sequence valve attachment, then you can use a single spool valve control. A drawing indicating where the two hoses are to be connected is attached to these instructions. Please note: Do not use a sequence valve with weights over 2500 lbs. Use two control valves on the forklift: one for clamping and one for dumping.

Please make sure that all pivot points are lubricated daily with a grease that provides an anti-friction film imparting good oxidation inhibition and a neutralizing action on acids. It is highly important that the hydraulic oil supply for this unit is clean and filtered through a system for trouble free performance of your Bin Dumper unit. Hose springs and ty-raps should be checked daily for wear and tear. Before using the dumper observe all safety decals.

Hydraulic Tubing Diagram

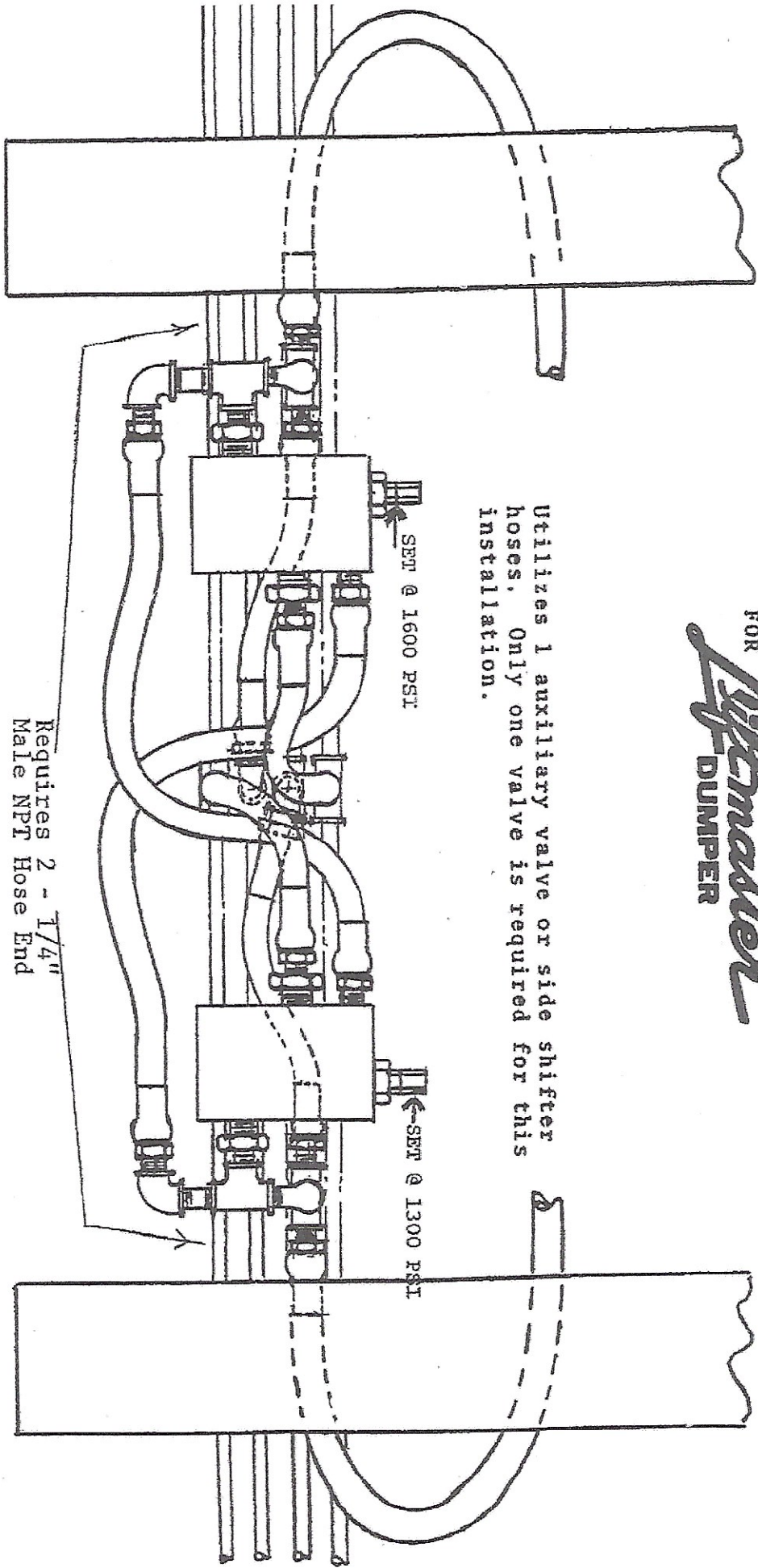


HALAVAC, INC.
3875 East Jordan Avenue
FREMONT, CALIFORNIA 94725

SV2 SEQUENCE VALVE ATTACHMENT

FOR *Liftmaster*
DUMPER

Utilizes 1 auxiliary valve or side shifter hoses. Only one valve is required for this installation.



Left Sequence Valve - tilt cylinder retracts, builds pressure, opens the squeeze cylinder.

Right Sequence Valve - closes clamp cylinder, builds pressure activates tilt cylinder.

Requires 2 - 1/4" Male NPT Hose End

A PRODUCT OF

MALAVAC, INC.
3875 EAST JENSEN AVE
FRESNO, CA 93725

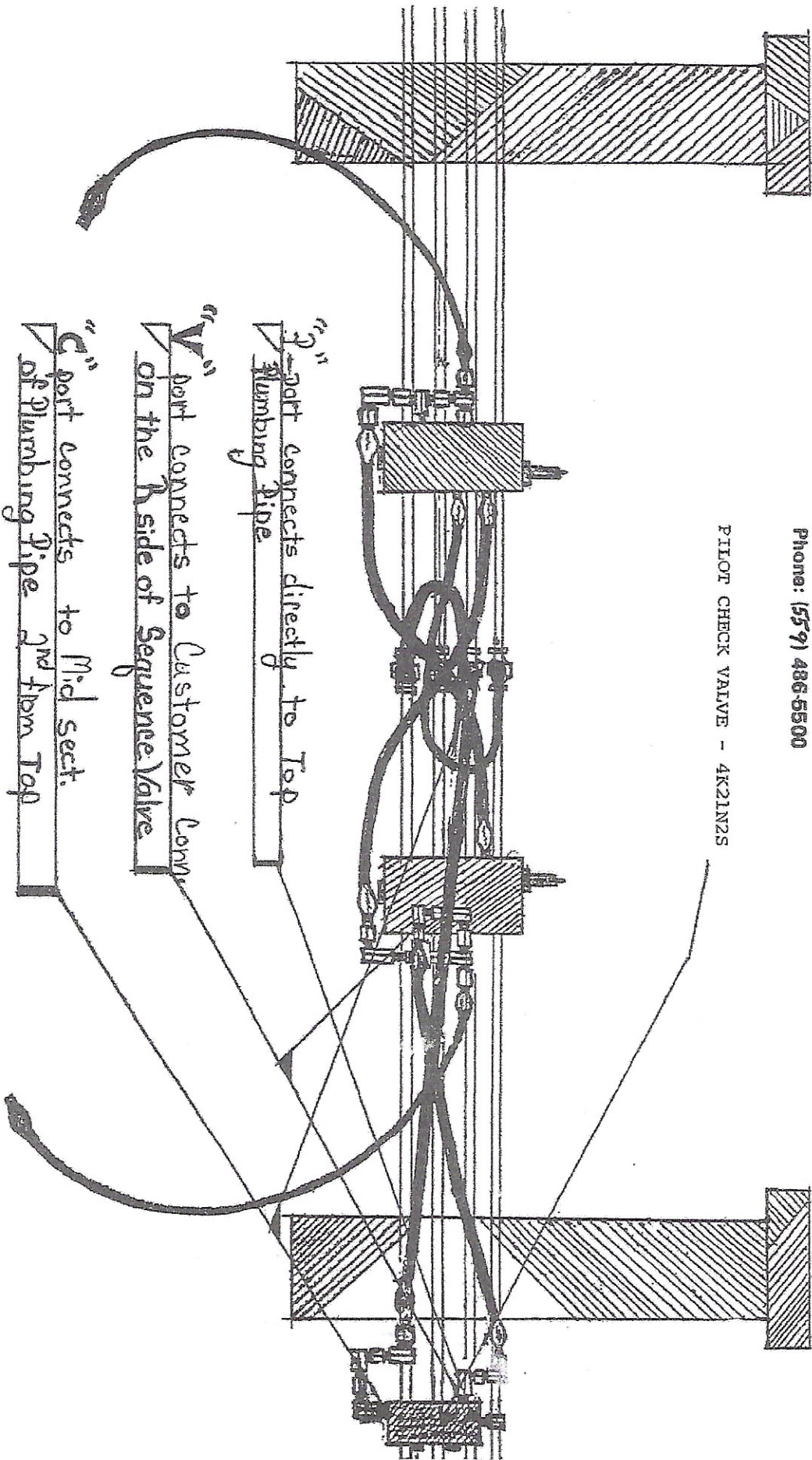
A PRODUCT OF

Malacor, Inc.

3875 E. Jensen Ave. Fresno, Calif. 93725

Phone: (559) 486-5500

PILOT CHECK VALVE - 4K21N2S



"3"
port connects directly to Top
Plumbing Pipe

"V"
port connects to Customer Conn
on the B side of Sequence Valve

"C"
port connects to Mid Sect.
of Plumbing Pipe 2nd from Top

SEQUENCE & PILOT CHECK SYSTEM DIAGRAM

